



## Pressure transmitter GT310

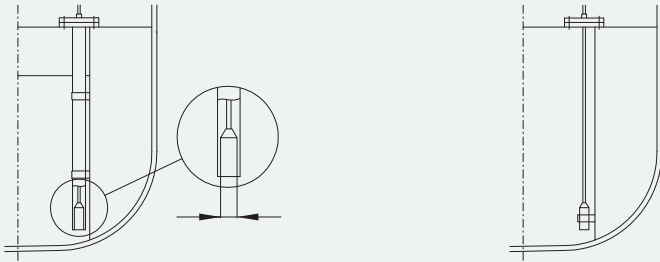
*for tank measurement*

## Installation options

Our pressure transmitter can be used for replacements of all electronic tank measurement sensors with an output signal of 4-20mA. With several mounting adaptors the transmitter lives up to his name - the allrounder.

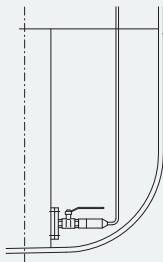
### Top mounted installation (submerged)

In case of top mounted installation our sensor will be equipped with a special adaptor ring in order to extend the sensor's diameter.



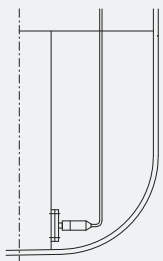
### Side mounted installation (dry)

In case of side mounted installation via flange and ball valve our sensor will be equipped with an adaptor.



### Side mounted installation (dry)

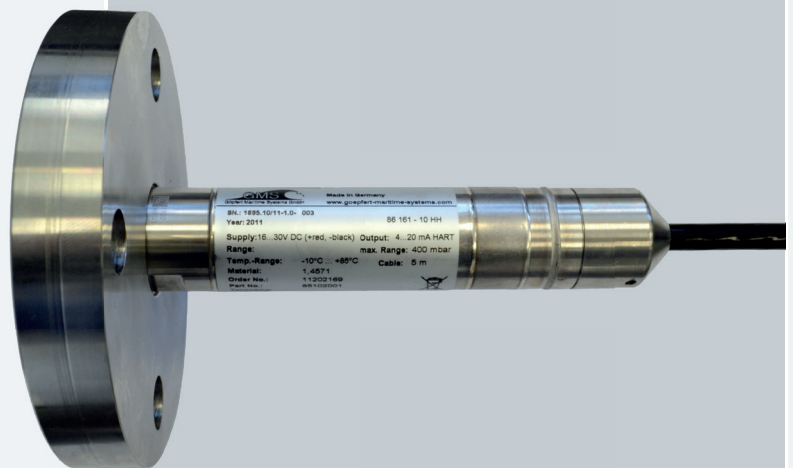
In case of side mounted installation via flange our sensor will be equipped with a side flange.



Pressure transmitter with adaptor ring for submerged installation.  
Adaptor ring dimensions e.g. OD 40, 42, 45, 55 mm.



Pressure transmitter with adaptor for dry installation.  
Adaptor size e.g. BSP 1" male thread to BSP 1/2" female thread.



Pressure transmitter with side flange.  
Flange dimensions e.g. DN 25, 40, 50.

10:00, Port of Hong Kong.  
Vessel prepares for ballasting. Tank Level Transmitter in ballast tank is broken. Problem: How to get an adequate replacement fast and convenient?  
10:15, Port of Hong Kong.  
Problem solved. Crew has installed a new transmitter with the exact measuring range.  
**Just a vision? Just our standard!**



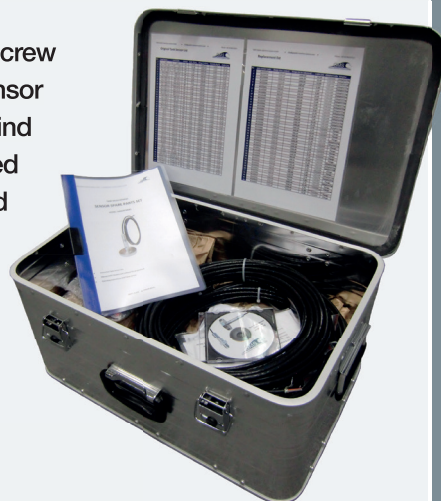
HART-Modem for the simple and convenient programming of a pressure transmitter according to the required measuring range.

## Spare parts package

With our spare parts package a vessel's crew is always able to program and install a new pressure transmitter on its own.

A spare parts package consists of up to 3 pressure transmitter with the maximum required cable length and adaptors, which enable to replace every sensor on board. In order to adjust the measuring range to the specific tank, a HART modem is also part of the package.

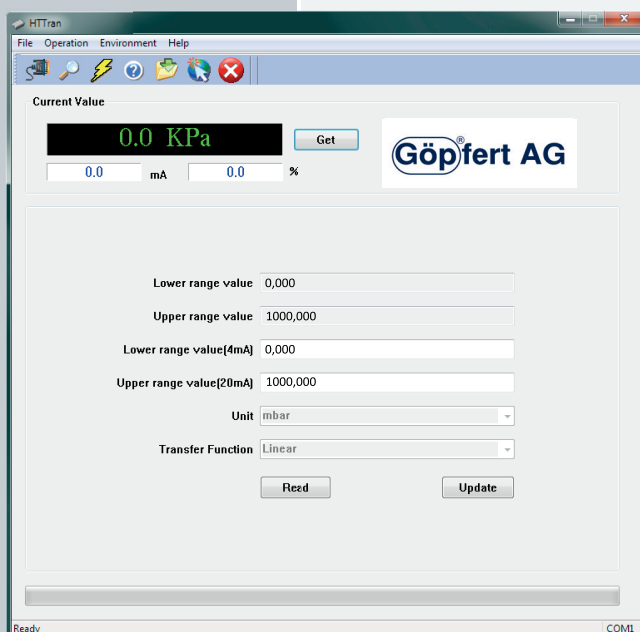
In case of a broken sensor, a crew member just checks the sensor list inside the package to find out, which of our supplied transmitters needs to be used for replacement, what kind of adaptor is necessary, and according to which measuring range the transmitter has to be programmed.



The programming of the transmitter is kept simple and convenient. The HART-Modem needs to be connected to the electric wires of the transmitter cable (via clamps) and to a personal computer (via a USB cable) and the program needs to be started.

Just by clicking READ, the current measuring range of the sensor will be shown on the display. After having entered the new measuring range according to the sensor list into the field UPPER RANGE VALUE(20mA) and after having confirmed with UPDATE, the sensor is programmed and ready for installation.

Program for the adjustment of the transmitters' measuring range consisting of just two buttons: One for reading out a value, the other for entering a new value.



- No constriction of a smooth vessel operation anymore
- A simplified purchasing process of transmitters for spare
- Time savings
- Money savings

**Göpfer AG**

GMS  
Göpfer Maritime Systems



# Pressure transmitter

*Simple and convenient exchange of all pressure transmitter with an output signal of 4-20mA*



Information required to find a suitable exchange for your broken pressure transmitter:

## Type of installation

Top mounted (outside diameter of sensor to be replaced)

Side mounted (flange size/ thread of ball valve)

## Measuring range

Cable length

Tank code

Send us your inquiry via e-mail or fax, ask for our sensor identification sheet for an easy identification of the required transmitter as spare part or call us directly in case of questions or for further support.

**Göpfert AG**

**GMS**  
Göpfert Maritime Systems

Göpfert AG  
Division Maritime Systems  
Industriestr.  
D-25795 Weddingstedt  
Germany

Tel. +49(0)481 903 0  
Fax +49(0)481 903 90  
info@goepfert-maritime-systems.com  
www.goepfert-maritime-systems.com